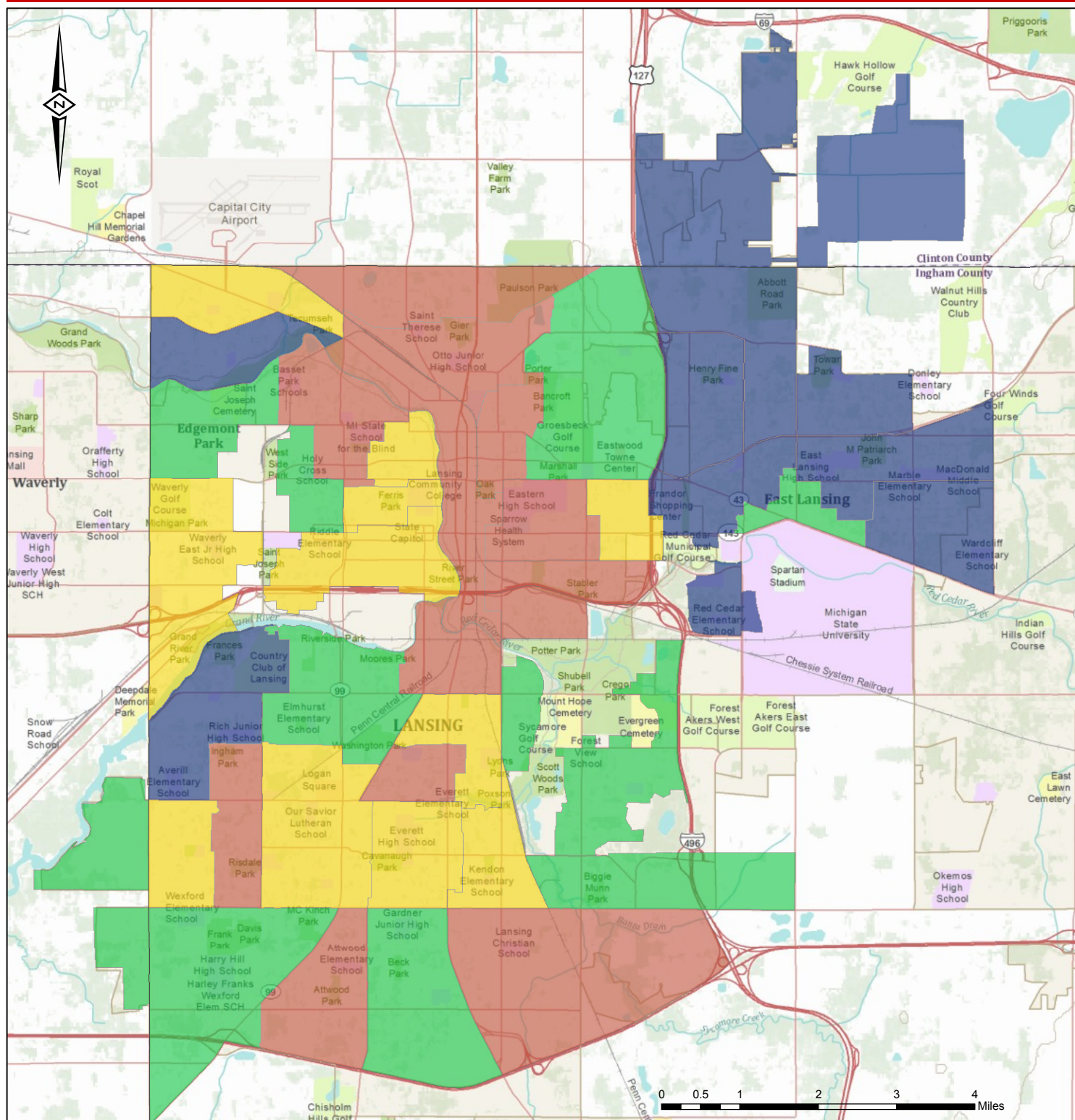


Lansing City, East Lansing City, and Lansing Charter Township Grouping for CHNA



Legend

- city / township boundary
- county boundary
- highway or major road
- less than \$97,500.00
- \$97,500.01 - \$111,700.00
- \$111,700.01 - \$144,290.75
- \$144,290.76 or more

Source: 2005-2009 American Community Survey



**Ingham County
Health Department**

**Community Health Assessment
Public Health Services**