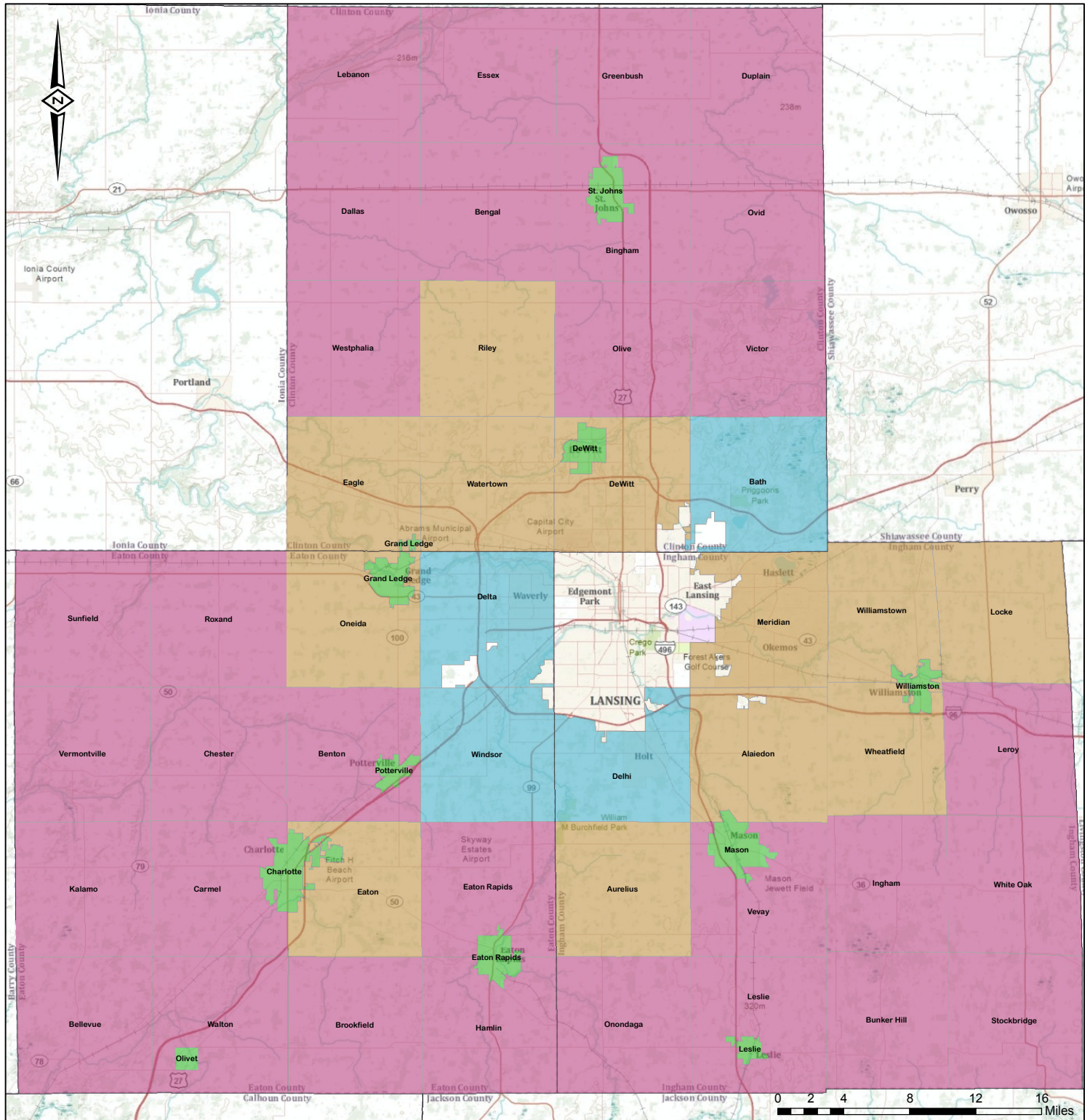


# Municipality Grouping for CHNA

(excluding Lansing City, East Lansing City, and Lansing Charter Township)



## Legend

- city / township boundary
- county boundary
- highway or major road
- low to moderate median home value / low population density
- low to moderate median home value / high population density
- moderate median home value / medium population density
- high median home value

Source: 2010 United States Decennial Census  
2005-2009 American Community Survey



**Ingham County  
Health Department**

**Community Health Assessment  
Public Health Services**